

Vias Arteriais - Avenida Santos Dumont

Luminária: 120W
Altura: 7 m
Distância entre Postes: 32 m
Via: 7 m
Canteiro Central: 1 m
Calçada: 4 m
Braço: 2,5 m

Rua/Av.: Av. Santos Dumont
Classificação de Via/Lux: V1 / 30 lx
Classificação de Calçada/Lux: P2 / 10 lx

Date: 06.04.2015
Operator:

Operator
 Telephone
 Fax
 e-Mail

Table of contents

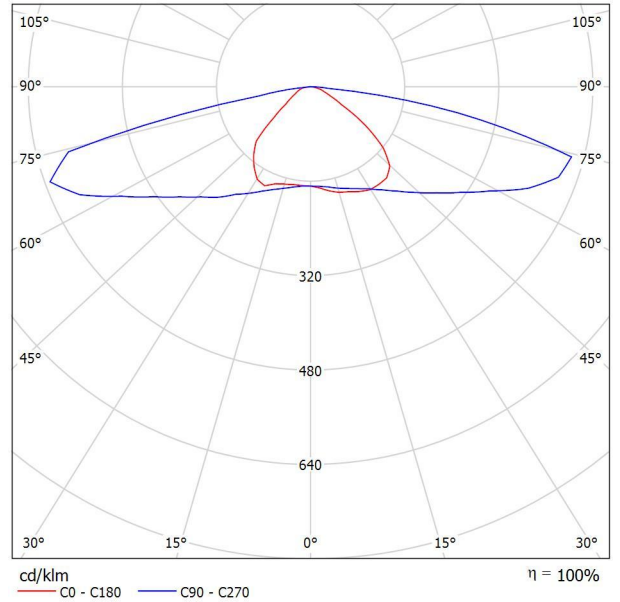
Vias Arteriais - Avenida Santos Dumont	
Project Cover	1
Table of contents	2
Luminária 120W	
Luminaire Data Sheet	3
Projeto Luminotécnico	
Planning data	4
Photometric Results	6
3D Rendering	8
False Colour Rendering	9
Valuation Fields	
Via	
Value Chart (E)	10
Observer	
Observador 1	
Isolines (L)	11
Observador 2	
Isolines (L)	12
Via	
Value Chart (E)	13
Observer	
Observador 3	
Isolines (L)	14
Observador 4	
Isolines (L)	15
Calçada	
Value Chart (E)	16
Calçada	
Value Chart (E)	17

Operator
 Telephone
 Fax
 e-Mail

Luminária 120W / Luminaire Data Sheet

See our luminaire catalog for an image of the luminaire.

Luminous emittance 1:



Luminaire classification according to CIE: 100
 CIE flux code: 31 65 93 100 100

Due to missing symmetry properties, no UGR table can be displayed for this luminaire.

Operator
Telephone
Fax
e-Mail

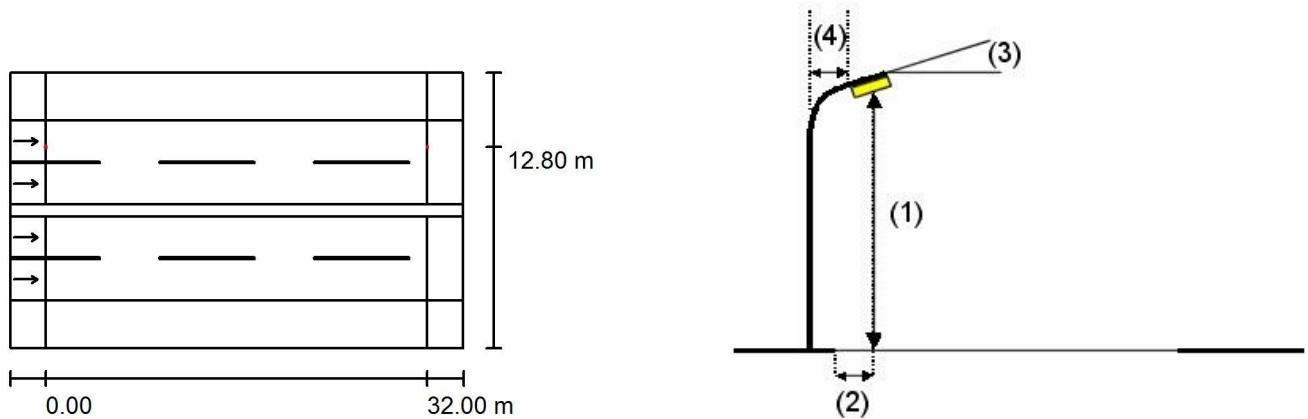
Projeto Luminotécnico / Planning data

Street Profile

Calçada	(Width: 4.000 m)
Via	(Width: 7.000 m, Number of lanes: 2, tarmac: R3, q0: 0.070)
Canteiro Central	(Width: 1.000 m, Height: 0.000 m)
Via	(Width: 7.000 m, Number of lanes: 2, tarmac: R3, q0: 0.070)
Calçada	(Width: 4.000 m)

Maintenance factor: 1.00

Luminaire Arrangements



Luminaire:	Luminária 120W
Luminous flux (Luminaire):	11394 lm
Luminous flux (Lamps):	11403 lm
Luminaire Wattage:	126.4 W
Arrangement:	Single row, top
Pole Distance:	32.000 m
Mounting Height (1):	7.000 m
Height:	6.900 m
Overhang (2):	2.200 m
Boom Angle (3):	0.0 °
Boom Length (4):	2.500 m

Maximum luminous intensities	
at 70°:	524 cd/klm
at 80°:	830 cd/klm
at 90°:	229 cd/klm

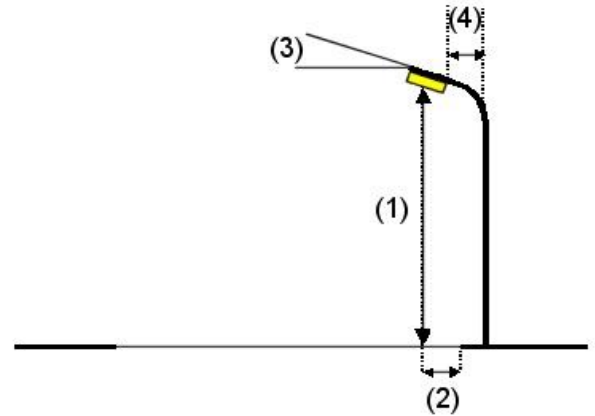
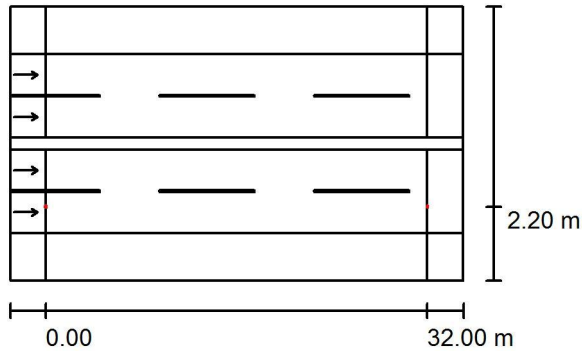
Any direction forming the specified angle from the downward vertical, with the luminaire installed for use.

Arrangement complies with glare index class D.2.

Operator
Telephone
Fax
e-Mail

Projeto Luminotécnico / Planning data

Luminaire Arrangements



Luminaire:	Luminária 120W
Luminous flux (Luminaire):	11394 lm
Luminous flux (Lamps):	11403 lm
Luminaire Wattage:	126.4 W
Arrangement:	Single row, bottom
Pole Distance:	32.000 m
Mounting Height (1):	7.000 m
Height:	6.900 m
Overhang (2):	2.200 m
Boom Angle (3):	0.0 °
Boom Length (4):	2.500 m

Maximum luminous intensities

at 70°:	524 cd/klm
at 80°:	830 cd/klm
at 90°:	229 cd/klm

Any direction forming the specified angle from the downward vertical, with the luminaire installed for use.

Arrangement complies with glare index class D.2.

Operator
Telephone
Fax
e-Mail

Projeto Luminotécnico / Photometric Results



Maintenance factor: 1.00

Scale 1:272

Calculation Field List

1 Via
Length: 32.000 m, Width: 7.000 m
Grid: 11 x 6 Points
Accompanying Street Elements: Via.
tarmac: R3, q0: 0.070
Selected Lighting Class: ME4a

(Not all lighting performance requirements are met.)

	L_{av} [cd/m ²]	U0	UI	TI [%]	SR
Calculated values:	2.59	0.53	0.79	10	0.74
Required values according to class:	≥ 2.00	≥ 0.40	≥ 0.70	≤ 10	≥ 0.50
Fulfilled/Not fulfilled:	✓	✓	✓	✓	✓

Operator
Telephone
Fax
e-Mail

Projeto Luminotécnico / Photometric Results

Calculation Field List

2 Via
Length: 32.000 m, Width: 7.000 m
Grid: 11 x 6 Points
Accompanying Street Elements: Via.
tarmac: R3, q0: 0.070
Selected Lighting Class: ME4a

(Not all lighting performance requirements are met.)

	L_{av} [cd/m ²]	U0	UI	TI [%]	SR
Calculated values:	2.48	0.52	0.72	10	0.74
Required values according to class:	≥ 2.00	≥ 0.40	≥ 0.70	≤ 10	≥ 0.50
Fulfilled/Not fulfilled:	✓	✓	✓	✓	✓

3 Calçada
Length: 32.000 m, Width: 4.000 m
Grid: 11 x 3 Points
Accompanying Street Elements: Calçada.
Selected Lighting Class: CE5

(All lighting performance requirements are met.)

	E_{av} [lx]	U0
Calculated values:	13.50	0.44
Required values according to class:	≥ 5.00	≥ 0.20
Fulfilled/Not fulfilled:	✓	✓

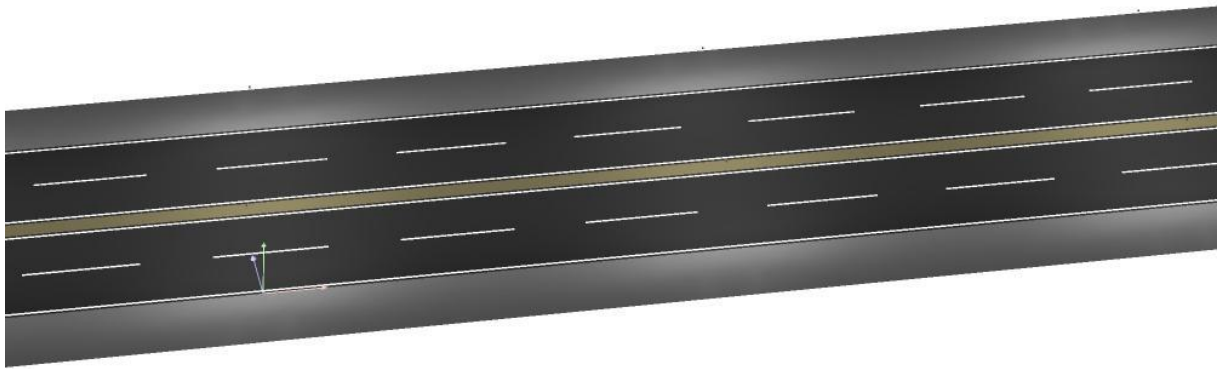
4 Calçada
Length: 32.000 m, Width: 4.000 m
Grid: 11 x 3 Points
Accompanying Street Elements: Calçada.
Selected Lighting Class: CE5

(All lighting performance requirements are met.)

	E_{av} [lx]	U0
Calculated values:	13.44	0.44
Required values according to class:	≥ 5.00	≥ 0.20
Fulfilled/Not fulfilled:	✓	✓

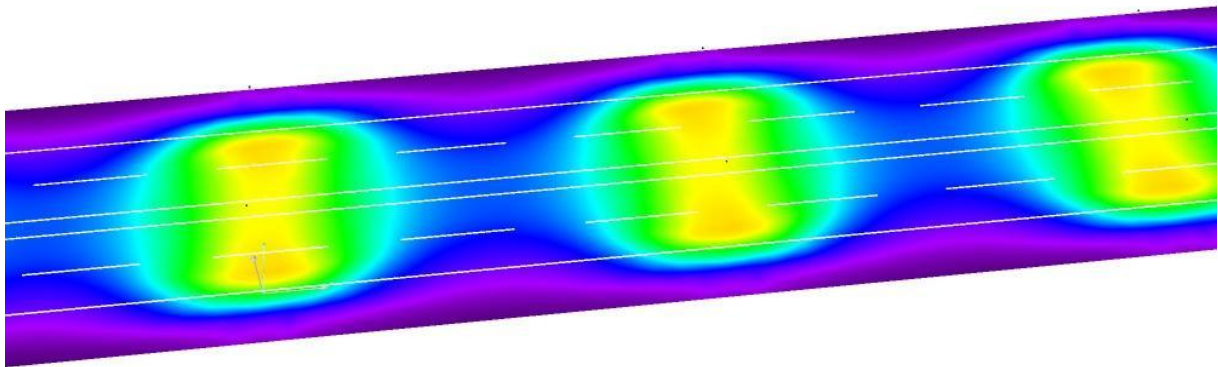
Operator
Telephone
Fax
e-Mail

Projeto Luminotécnico / 3D Rendering



Operator
Telephone
Fax
e-Mail

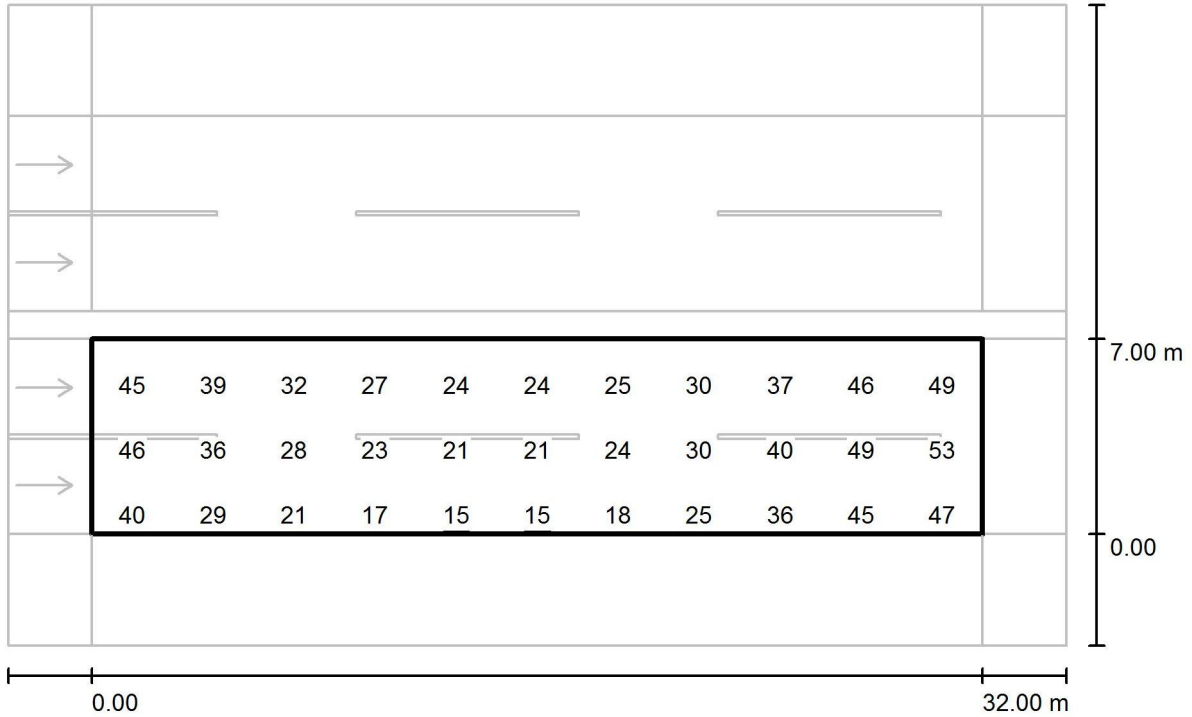
Projeto Luminotécnico / False Colour Rendering



0 10 20 30 40 50 60 70 80 lx

Operator
Telephone
Fax
e-Mail

Projeto Luminotécnico / Via / Value Chart (E)



Values in Lux, Scale 1 : 272

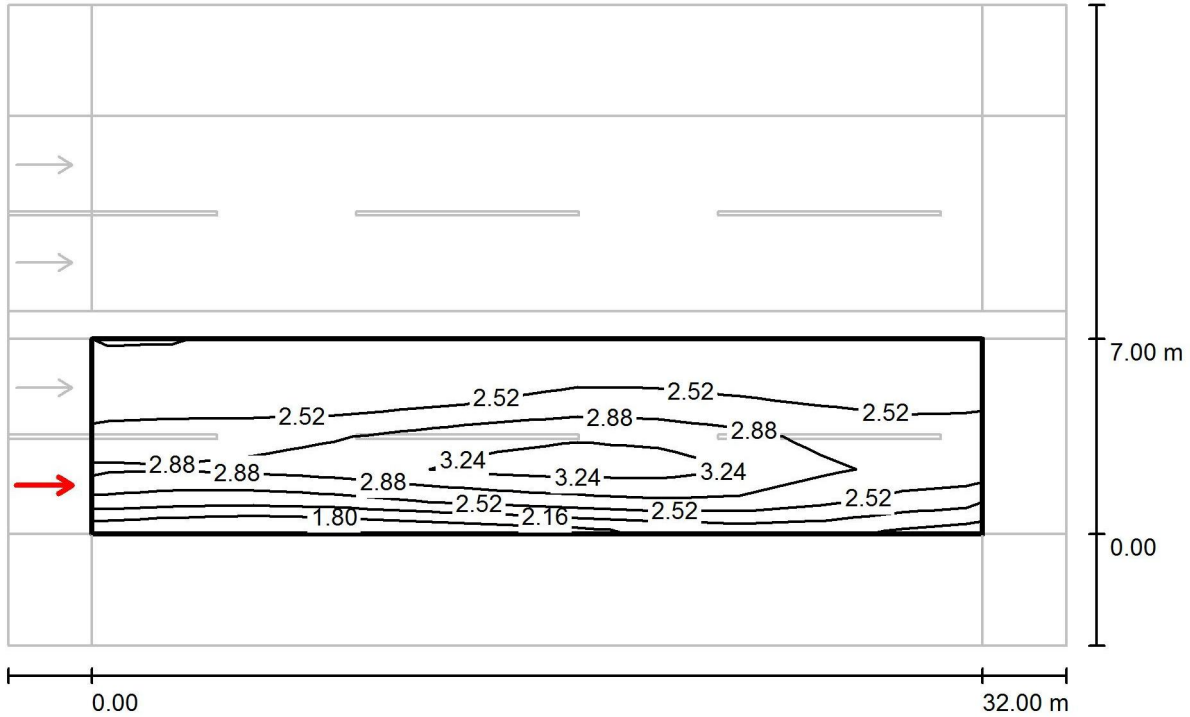
Not all calculated values could be displayed.

Grid: 11 x 6 Points

E_{av} [lx]	E_{min} [lx]	E_{max} [lx]	$u0$	E_{min} / E_{max}
33	15	55	0.456	0.275

Operator
Telephone
Fax
e-Mail

Projeto Luminotécnico / Via / Observador 1 / Isolines (L)



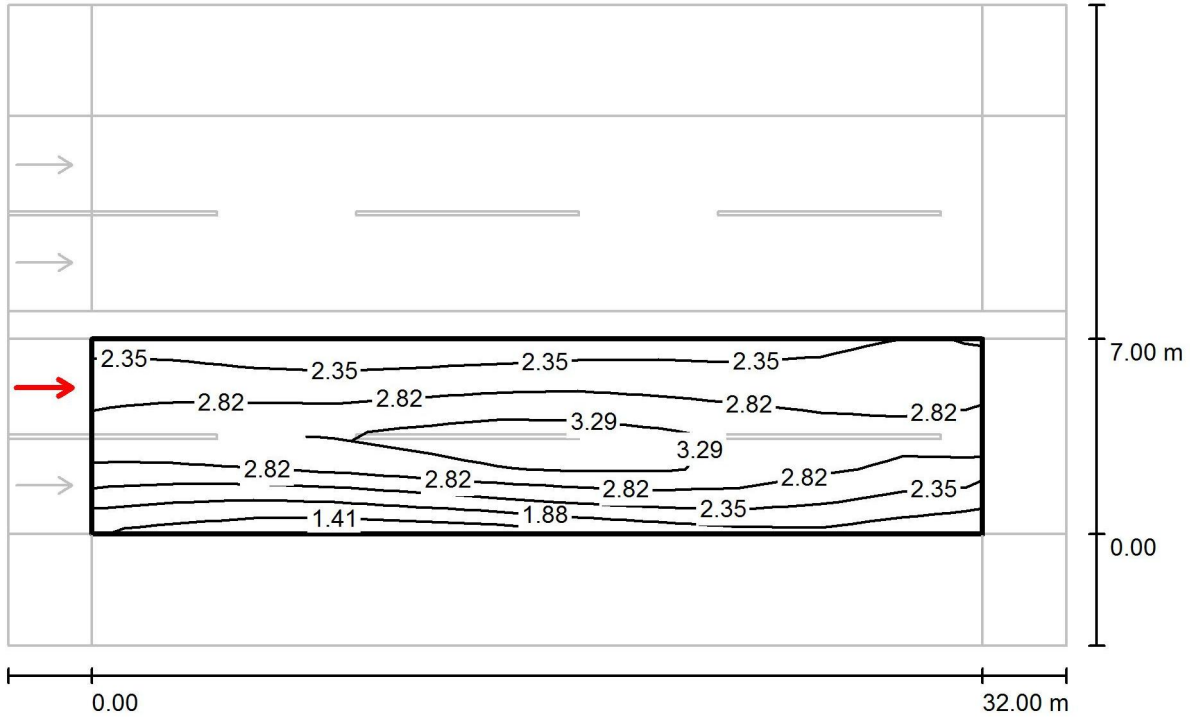
Values in Candela/m², Scale 1 : 272

Grid: 11 x 6 Points
Observer Position: (-60.000 m, 1.750 m, 1.500 m)
tarmac: R3, q0: 0.070

	L_{av} [cd/m ²]	U0	UI	TI [%]
Calculated values:	2.59	0.66	0.79	10
Required values according to class ME4a:	≥ 2.00	≥ 0.40	≥ 0.70	≤ 10
Fulfilled/Not fulfilled:	✓	✓	✓	✓

Operator
Telephone
Fax
e-Mail

Projeto Luminotécnico / Via / Observador 2 / Isolines (L)



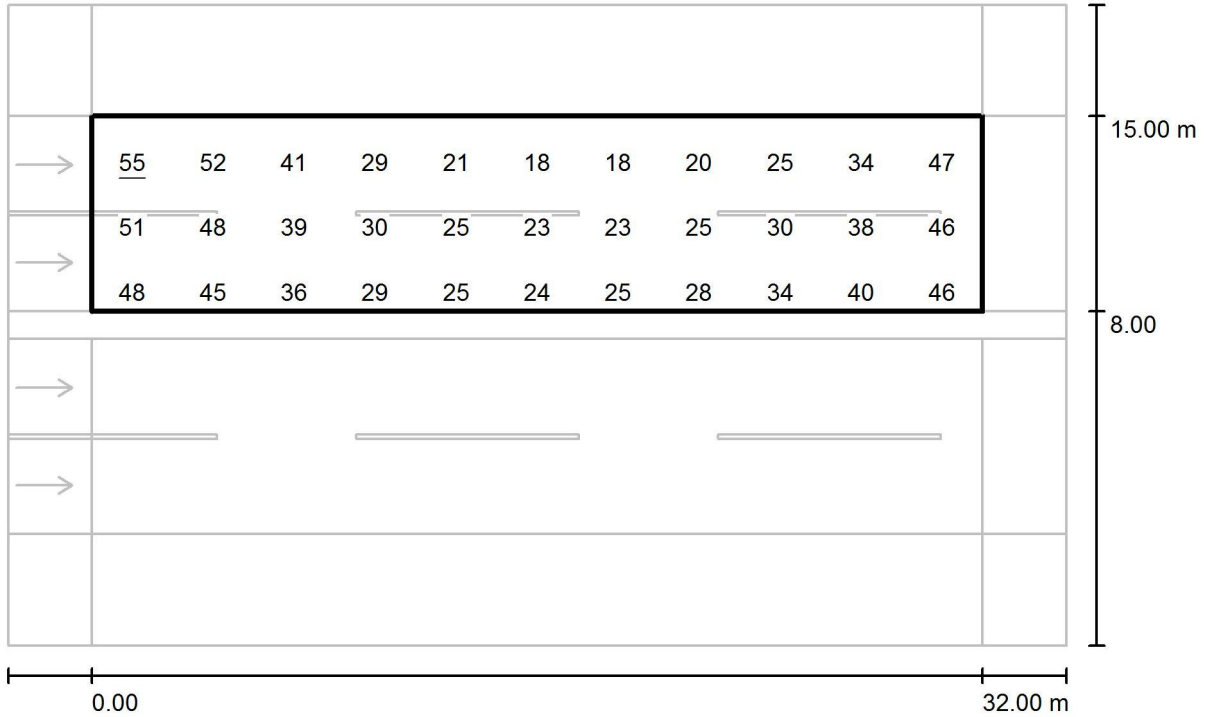
Values in Candela/m², Scale 1 : 272

Grid: 11 x 6 Points
Observer Position: (-60.000 m, 5.250 m, 1.500 m)
tarmac: R3, q0: 0.070

	L_{av} [cd/m ²]	U0	UI	TI [%]
Calculated values:	2.63	0.53	0.90	10
Required values according to class ME4a:	≥ 2.00	≥ 0.40	≥ 0.70	≤ 10
Fulfilled/Not fulfilled:	✓	✓	✓	✓

Operator
Telephone
Fax
e-Mail

Projeto Luminotécnico / Via / Value Chart (E)



Values in Lux, Scale 1 : 272

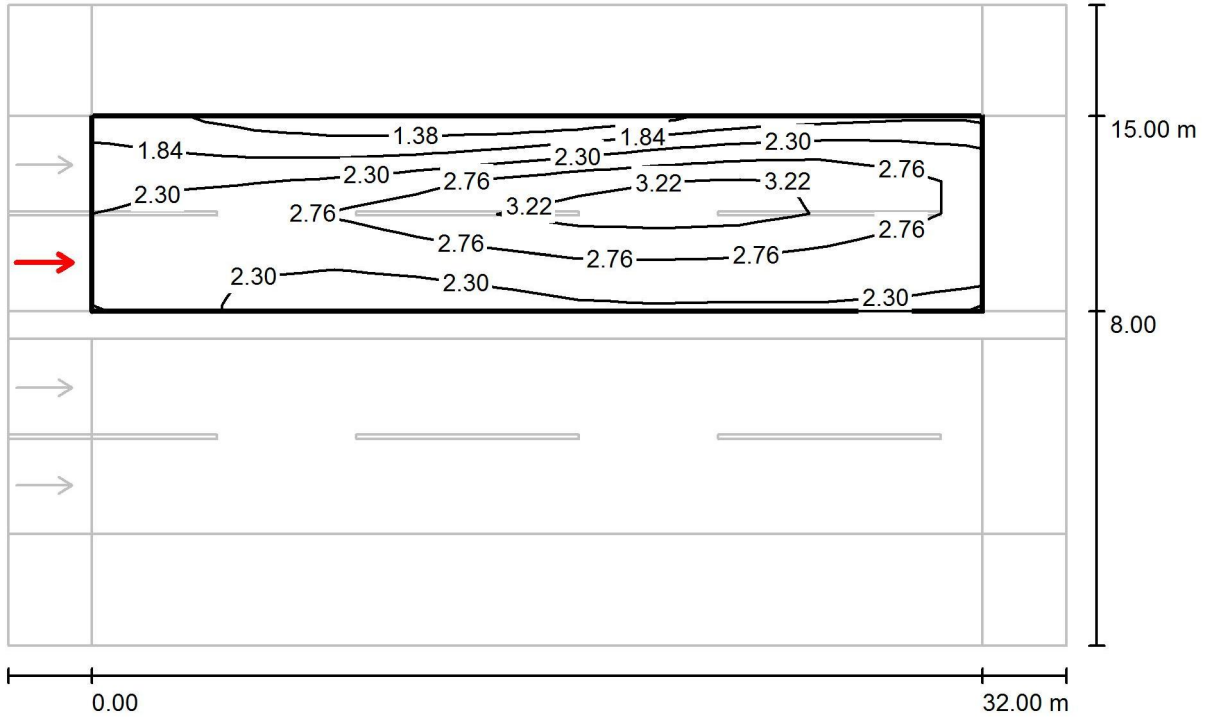
Not all calculated values could be displayed.

Grid: 11 x 6 Points

E_{av} [lx]	E_{min} [lx]	E_{max} [lx]	$u0$	E_{min} / E_{max}
33	15	55	0.458	0.276

Operator
Telephone
Fax
e-Mail

Projeto Luminotécnico / Via / Observador 3 / Isolines (L)



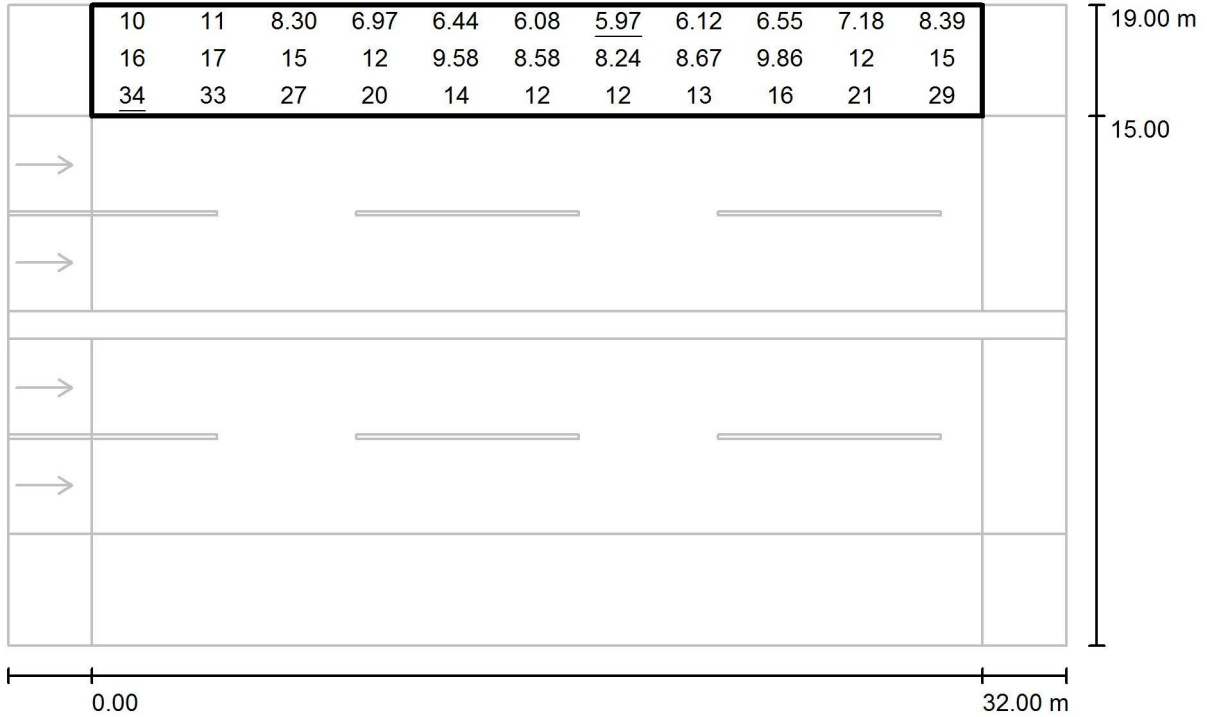
Values in Candela/m², Scale 1 : 272

Grid: 11 x 6 Points
Observer Position: (-60.000 m, 9.750 m, 1.500 m)
tarmac: R3, q0: 0.070

	L_{av} [cd/m²]	U0	UI	TI [%]
Calculated values:	2.48	0.52	0.84	10
Required values according to class ME4a:	≥ 2.00	≥ 0.40	≥ 0.70	≤ 10
Fulfilled/Not fulfilled:	✓	✓	✓	✓

Operator
Telephone
Fax
e-Mail

Projeto Luminotécnico / Calçada / Value Chart (E)



Values in Lux, Scale 1 : 272

Grid: 11 x 3 Points

E_{av} [lx]
14

E_{min} [lx]
5.97

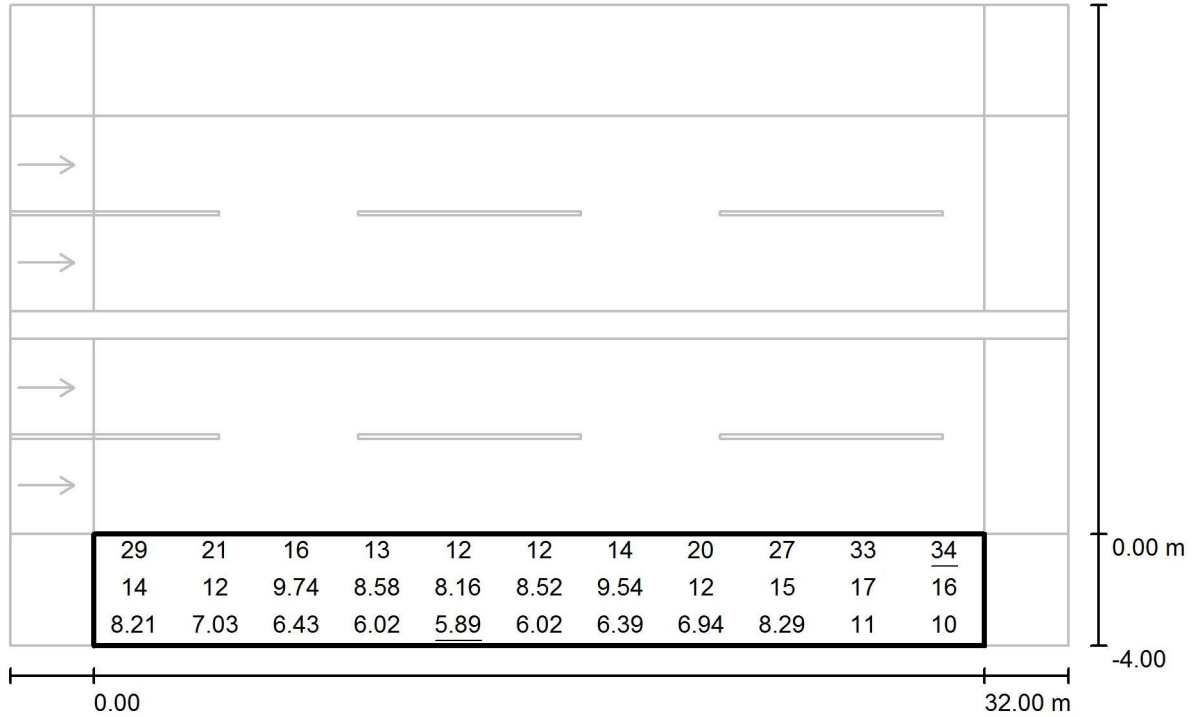
E_{max} [lx]
34

u_0
0.442

E_{min} / E_{max}
0.176

Operator
Telephone
Fax
e-Mail

Projeto Luminotécnico / Calçada / Value Chart (E)



Values in Lux, Scale 1 : 272

Grid: 11 x 3 Points

E_{av} [lx]	E_{min} [lx]	E_{max} [lx]	u0	E_{min} / E_{max}
13	5.89	34	0.438	0.173